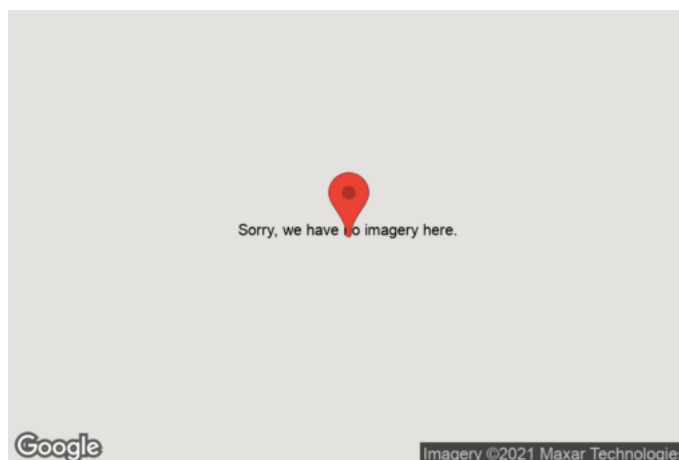


Demo

Prepared by
Contab Re

Created on
2021-03-08

Location
Groenlandia



Total area 139.10 m ²	Floors 1	Rooms 6	Bathrooms 2
--	--------------------	-------------------	-----------------------

Elevator
Yes

Suitable for
Abitazione ed ufficio

Public Transport
Nelle vicinanze

Demo

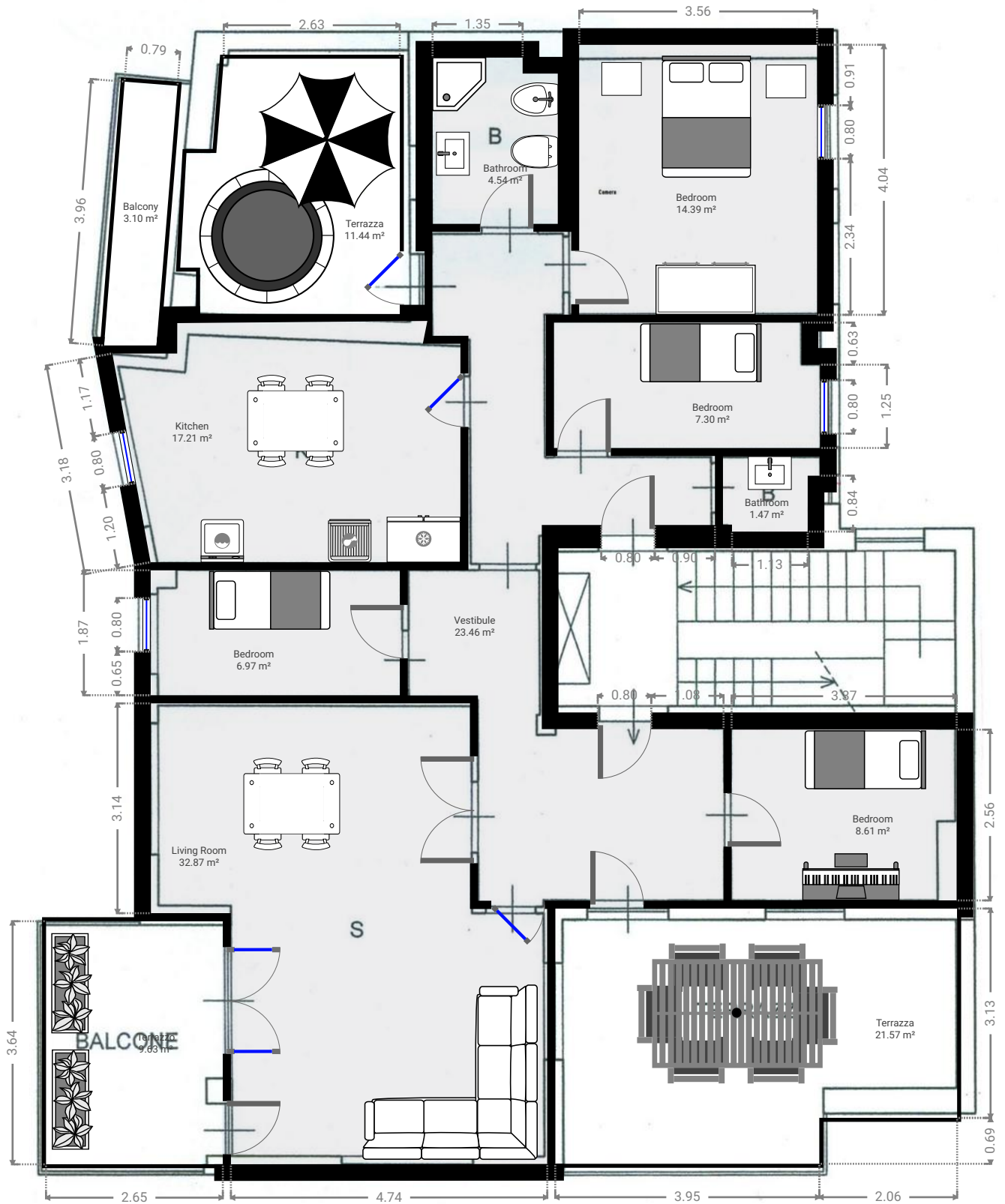
, Groenlandia

TOTAL AREA: 139.10 m² · LIVING AREA: 160.67 m² · FLOORS: 1 · ROOMS: 6



▼ 7th Floor

TOTAL AREA: 139.10 m² · LIVING AREA: 160.67 m² · ROOMS: 6



QUESTA PIANTA NON È MUNITA DI GARANZIA ALCUNA. CONTAB di Paolo Mastrogirolamo e SENSOPIA NON ACCORDA ALCUNA GARANZIA, COMPRESA MA NON LIMITATAMENTE ALLA GARANZIA DELLA QUALITÀ E PRECISIONE DELLE DIMENSIONI.

Demo

, Groenlandia

TOTAL AREA: 139.10 m² • LIVING AREA: 160.67 m² • FLOORS: 1 • ROOMS: 6



▼ 7th Floor

testo

Sala danza

Demo

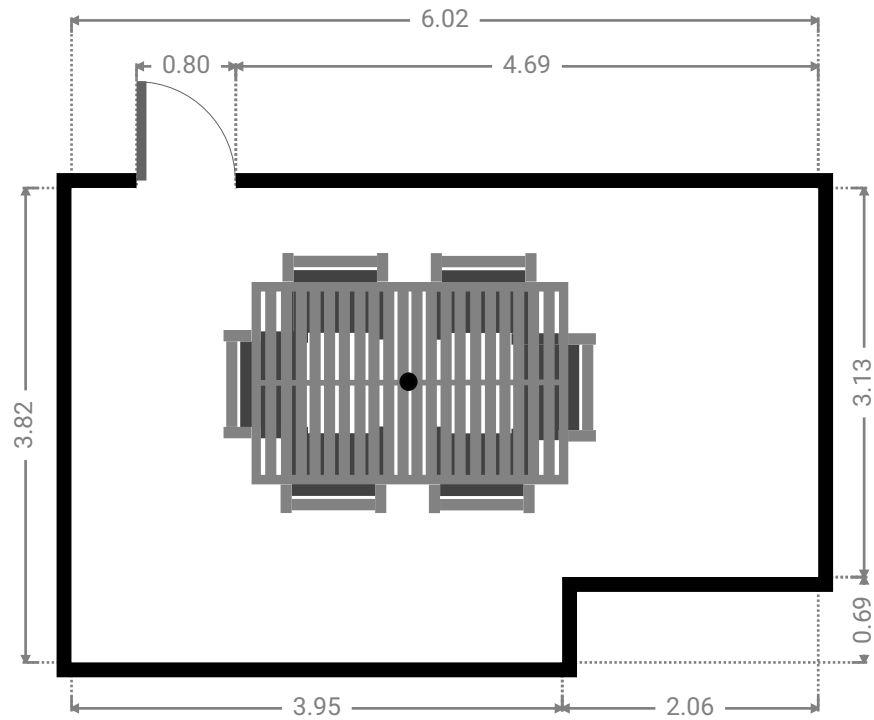
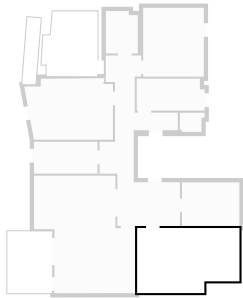
, Groenlandia

TOTAL AREA: 139.10 m² • LIVING AREA: 160.67 m² • FLOORS: 1 • ROOMS: 6



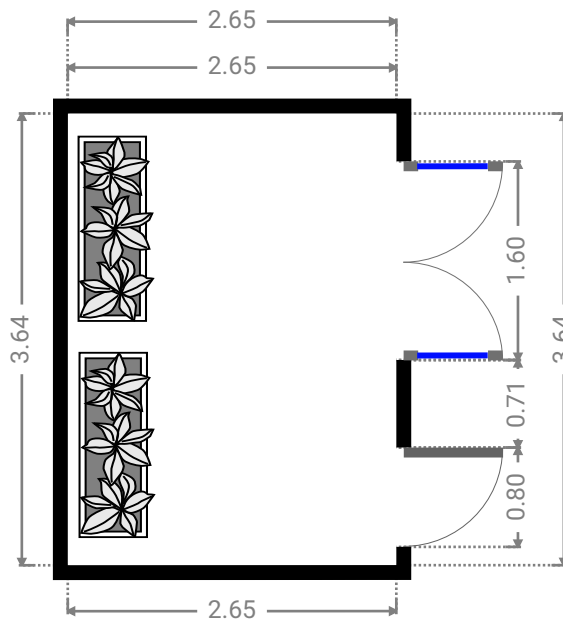
▼ Terrazza 7th Floor

WIDTH: 6.02 m • LENGTH: 3.82 m
AREA: 21.57 m² • PERIMETER: 19.68 m



▼ Terrazzo 7th Floor

WIDTH: 2.65 m • LENGTH: 3.64 m
AREA: 9.63 m² • PERIMETER: 12.57 m



Demo

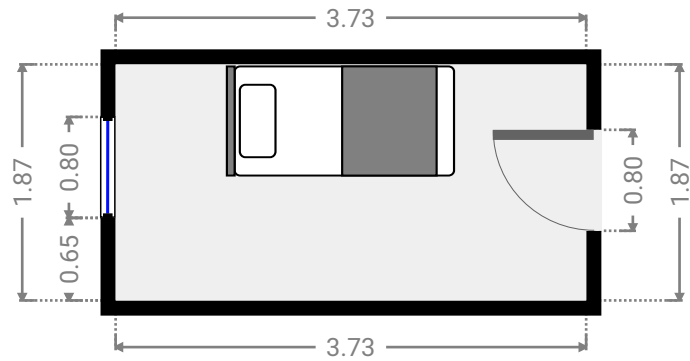
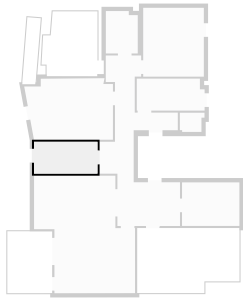
, Groenlandia

TOTAL AREA: 139.10 m² • LIVING AREA: 160.67 m² • FLOORS: 1 • ROOMS: 6



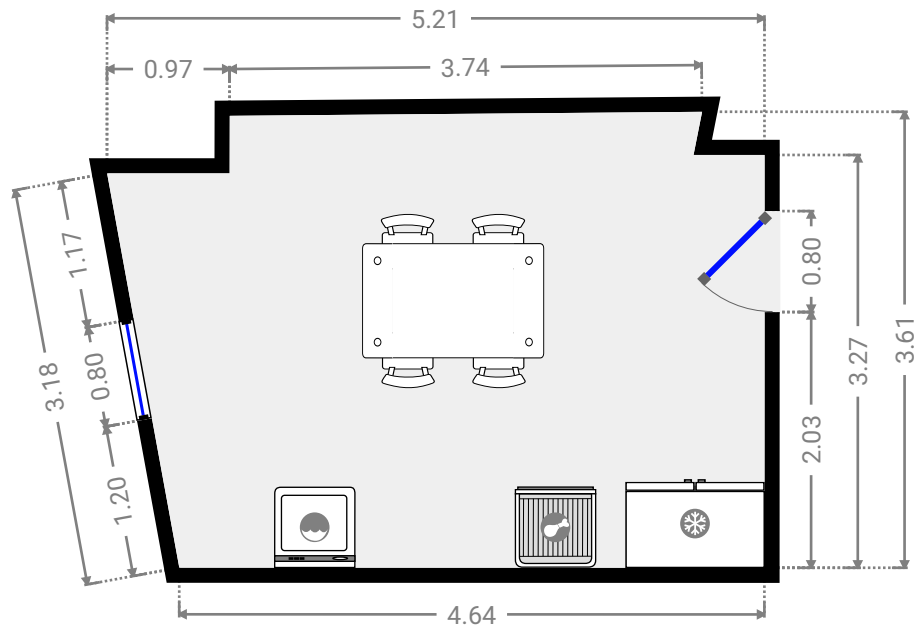
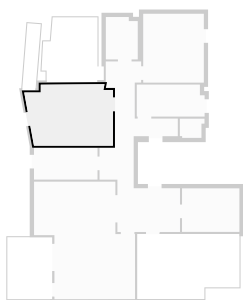
▼ Bedroom 7th Floor

WIDTH: 3.73 m • LENGTH: 1.87 m
AREA: 6.97 m² • PERIMETER: 11.20 m



▼ Kitchen 7th Floor

WIDTH: 5.21 m • LENGTH: 3.61 m
AREA: 17.21 m² • PERIMETER: 17.17 m



Demo

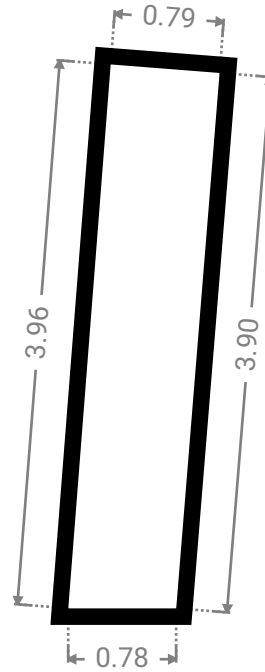
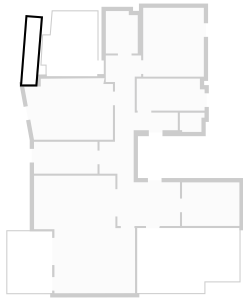
, Groenlandia

TOTAL AREA: 139.10 m² • LIVING AREA: 160.67 m² • FLOORS: 1 • ROOMS: 6



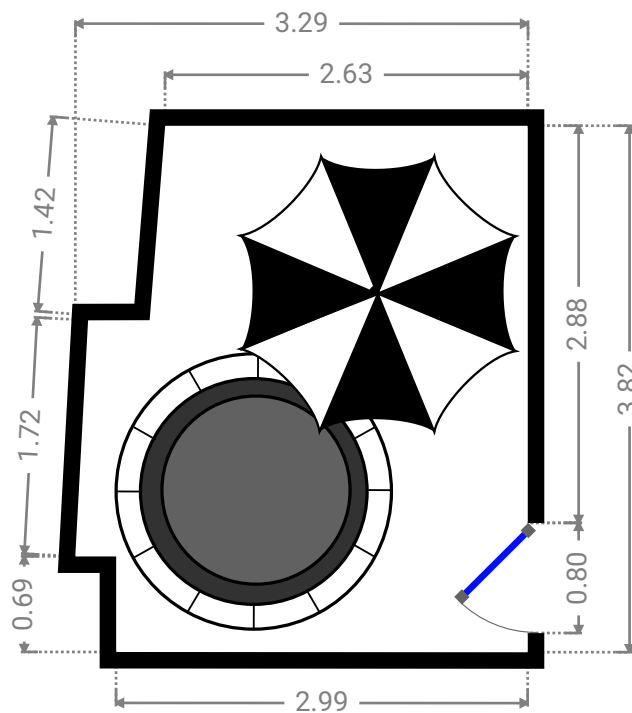
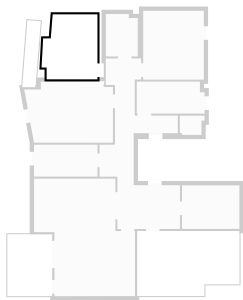
▼ Balcony 7th Floor

WIDTH: 0.79 m • LENGTH: 3.96 m
AREA: 3.10 m² • PERIMETER: 9.44 m



▼ Terrazza 7th Floor

WIDTH: 3.29 m • LENGTH: 3.82 m
AREA: 11.44 m² • PERIMETER: 14.02 m



Demo

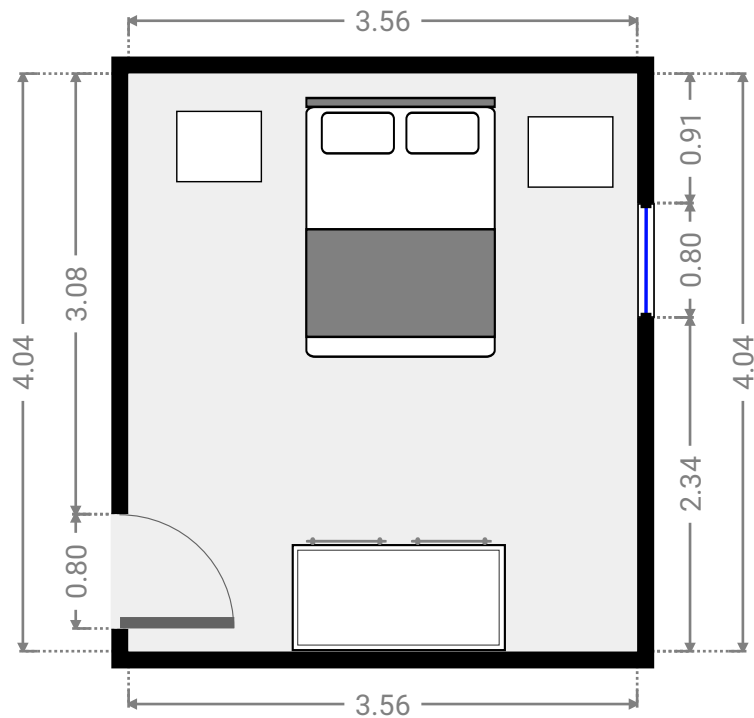
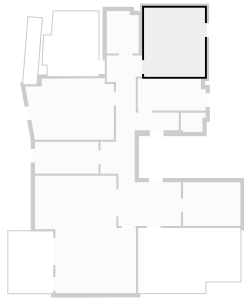
, Groenlandia

TOTAL AREA: 139.10 m² • LIVING AREA: 160.67 m² • FLOORS: 1 • ROOMS: 6



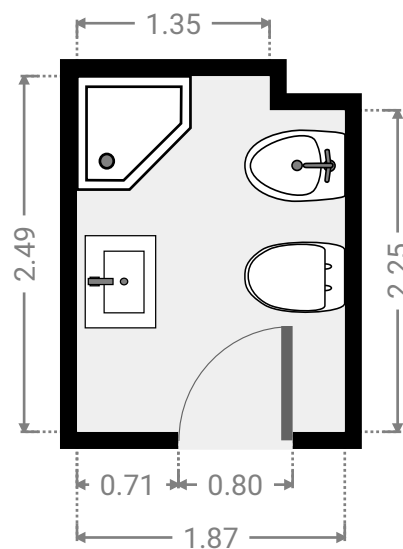
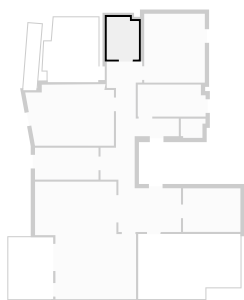
▼ Bedroom 7th Floor

WIDTH: 3.56 m • LENGTH: 4.04 m
AREA: 14.39 m² • PERIMETER: 15.21 m



▼ Bathroom 7th Floor

WIDTH: 1.87 m • LENGTH: 2.49 m
AREA: 4.54 m² • PERIMETER: 8.73 m



Demo

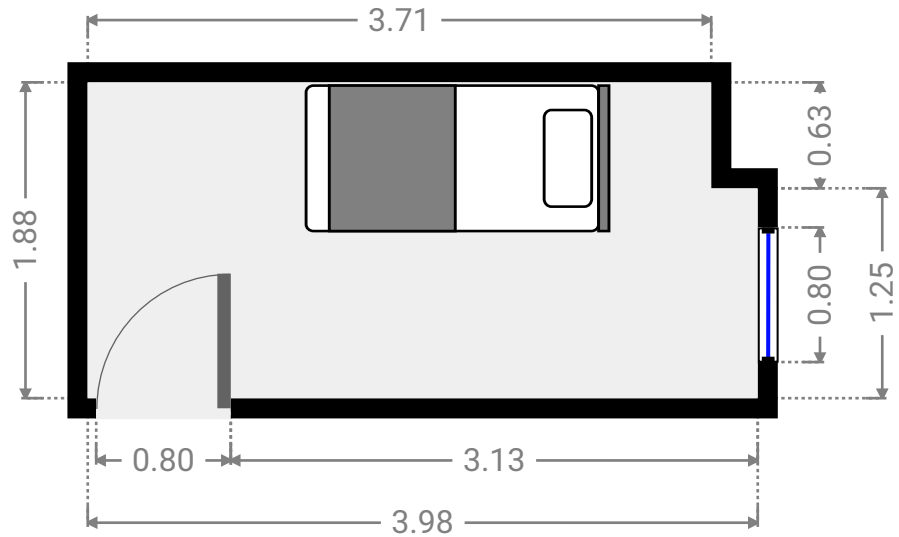
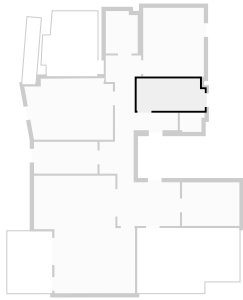
, Groenlandia

TOTAL AREA: 139.10 m² • LIVING AREA: 160.67 m² • FLOORS: 1 • ROOMS: 6



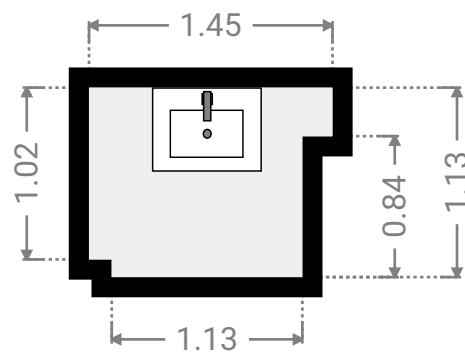
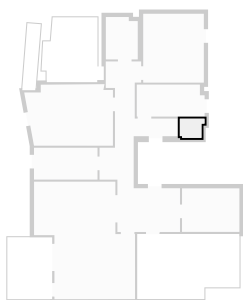
▼ Bedroom 7th Floor

WIDTH: 3.98 m • LENGTH: 1.88 m
AREA: 7.30 m² • PERIMETER: 11.72 m



▼ Bathroom 7th Floor

WIDTH: 1.45 m • LENGTH: 1.13 m
AREA: 1.47 m² • PERIMETER: 5.15 m



Demo

, Groenlandia

TOTAL AREA: 139.10 m² • LIVING AREA: 160.67 m² • FLOORS: 1 • ROOMS: 6



▼ Vestibule 7th Floor

WIDTH: 4.73 m • LENGTH: 10.02 m
AREA: 23.46 m² • PERIMETER: 36.50 m

